



**Manufacturing Technology, Inc.**  
Worldwide Service & Support

MTIwelding.com

## DOS-TO-WINDOWS® UPGRADE

Are you stranded with an old DOS-based machine that is no longer serviceable? You're working on borrowed time. MTI's team of upgrade experts have the parts and know-how to breathe new life into your machine for less than the cost of a new welder.

## BREAK FROM THE PAST

Eventually, your DOS-based machine is going to breakdown. That's a fact. You've done a remarkable job keeping it going, but it's still going to quit operating. Your DOS-based machine is as current as a fax machine and with just about as much computing power. Vintage machines, like yours, are becoming rarer every day, because they're simply too costly to maintain. DOS replacement parts are scarce, expensive, and in some cases simply not available.

When your machine goes down due to a DOS system failure, what's your recovery plan?

- Launch a desperate search for expensive parts that may no longer exist while counting the weeks or months that your production lies dormant?
- Or, calmly call the upgrade service experts at MTI who can modernize your system at a fraction of the cost of a new machine?

Maintaining a DOS machine has become increasingly expensive. When a DOS based machine part wears out, there's no guarantee that a replacement part will be available. Your production will be at a standstill for as long as it takes to find a solution. Fortunately, MTI has one waiting for you.

The investment in a MTI DOS-to-Windows® upgrade today will pay future dividends through an improved system that's scalable, can increase production capacity, and is more economical to service and maintain.

### AT A GLANCE

DOS	WINDOWS®
Limited on-screen troubleshooting messaging capability	Expanded & integrated on-screen system messaging for troubleshooting
No weld file portability	File portability via USBs, network drives, and Internet
Floppy disk interface	Network and Internet interface, including increased hard drive capacity
Dot matrix printer for client's hard copy reports	Latest printer technology
No remote monitoring for troubleshooting or maintenance	MTI Remote Access (MRA) monitoring included for troubleshooting & maintenance support
Incompatible with current and future mWELD software	Latest mWELD software installed & is upgradeable

## UPGRADE TO THE PRESENT

Based on our experts' diagnosis of your machine's current capabilities, they'll customize an upgrade plan that will give you an adaptable platform in which to add automation and improve process control. Your new configuration may include:

- Touchscreen displays and the latest, proprietary version of our mWeld controls program for improved machine operation and weld process interactions
- Smaller, streamlined electrical cabinetry housing parts compliant with today's codes
- Minimal pushbuttons for basic machine operation and safety
- Operator station with power outlets, USB ports, and Ethernet connectivity to enhance operator and maintenance personnel activities



While the decades old DOS based operating systems (left) hinder friction welder production scalability, today's Windows® based welders (right) are more operationally intuitive, configurable for production scalability, and provide greater control over each weld cycle.





## MORE THAN JUST SOFTWARE

Your customized upgrade gives upward scalability for increased part production, better part quality control, and easier updating to future machine components or processes.

MTI's expert upgrade team will make sure your friction welding system is elevated to state-of-the-art status by:

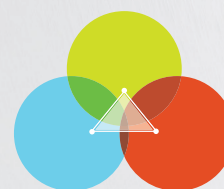
- Installing a new Programmable Logic Controller (PLC) loaded with the latest software which will allow for future expansion
- Replacing obsoleted MTI control boards with a new PLC rack complete with new Input/Output (I/O), motion, and analog cards
- Installing a closed loop temperature control circuit for steady temperatures to ensure optimum welder performance
- Installing a closed loop pressure control circuit for increased accuracy and repeatable pressure levels
- Installing a closed loop position control circuit for smoother Slide control, repeatable speeds and positioning, and more consistent welds

Our six months parts and labor warranty covers your upgrade immediately following the completion of the package.

MTI's team of expert service technicians can help you stay on top of your game by offering upgrades, maintenance packages, and preventative care monitoring. We can help you stay relevant for as long as you wish.

Because of all your past hard work, you deserve peace of mind and better profitability today and in the future. Leave the struggles of the old century behind by taking the low-cost path to a better future.

Your plan for a better tomorrow starts today. Contact MTI's team of service experts to get you started on your way.



**MTI INGENUITY**

*Brings it all together!*

INNOVATIVE. GENUINE. CONTINUITY.

### THE DOS-TO-WINDOWS® ADVANTAGE

DOS	UPGRADE ADVANTAGE
Long, unscheduled downtimes	Shorter scheduled downtime durations
Scarce, expensive or obsoleted parts	Inventoried parts that are less expensive
Unreliable pressure & position control	Improved weld process control
No tracing & reporting capability to meet imposed requirements	Full tracing and reporting functionality to meet requirements
Dot matrix printer required for hard copy output	Modern printer technology compliant
Expensive service calls to repair/replace old parts	Lower service & maintenance costs
Unable to use remote access	MTI Remote Access (MRA) installed with upgrade

*Latest touchscreen welding software program for superior machine performance.*



*Full individual weld-cycle traceability that is also viewable on your own computer.*

DOS

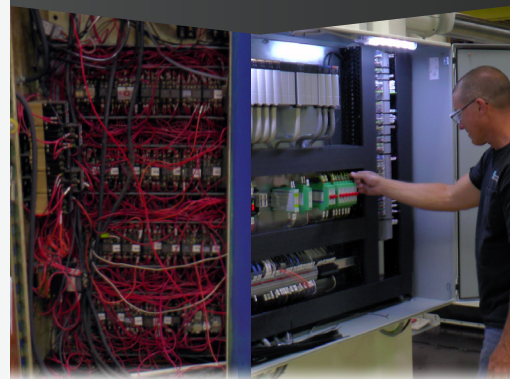


Upgrade



Reports are Traceable and Portable

*Updated safety circuit designed around today's safety codes.*



1990s Cabinetry

Today's Cabinetry

## CONTACT MTI SERVICE

**GLOBAL MANAGER:** Frank Stec  
P: +1 574 233 9490

**NORTH AMERICA MGR:** Brian Roberts  
P: +1 574 233 9490  
F: +1 574 239 1245

**EMAIL:**  
[MTIwwservice@mtiwelding.com](mailto:MTIwwservice@mtiwelding.com)

## WORLDWIDE SERVICE & SUPPORT

574.233.9490 | [MTIwelding.com](http://MTIwelding.com)

Peace of mind is complete confidence, knowing you have the finest machine in the world, backed by the finest support at all times. It's knowing that obstacles to keeping your machine operating at optimal performance will be met with a quick, sure-handed response.

© 2016 Manufacturing Technology, Inc.

